

Installation assistance available at:

# RFTECH

[www.rockfordfosgate.com/rftech](http://www.rockfordfosgate.com/rftech)

## RZR® DUAL AMPLIFIER INSTALLATION KIT

### RFRZ-K4D



Serial Number: \_\_\_\_\_ Date of Purchase: \_\_\_\_\_

# Introduction

Dear Customer,

*Congratulations on your purchase of the world's finest brand of audio products. At Rockford Fosgate we are fanatics about musical reproduction at its best, and we are pleased you chose our product. Through years of engineering expertise, hand craftsmanship and critical testing procedures, we have created a wide range of products that reproduce music with all the clarity and richness you deserve.*

*For maximum performance we recommend you have your new Rockford Fosgate product installed by an Authorized Rockford Fosgate Dealer, as we provide specialized training through Rockford Technical Training Institute (RTTI). Please read your warranty and retain your receipt and original carton for possible future use.*

*Great product and competent installations are only a piece of the puzzle when it comes to your system. Make sure that your installer is using 100% authentic installation accessories from Rockford Fosgate in your installation. Rockford Fosgate has everything from RCA cables and speaker wire to power wire and battery connectors. Insist on it! After all, your new system deserves nothing but the best.*

*To add the finishing touch to your new Rockford Fosgate image order your Rockford accessories, which include everything from T-shirts to hats.*

*Visit our web site for the latest information on all Rockford products;*

**[www.rockfordfosgate.com](http://www.rockfordfosgate.com)**

or, in the U.S. call 1-800-669-9899 or FAX 1-800-398-3985. For all other countries, call +001-480-967-3565 or FAX +001-480-966-3983.

## Table of Content

2	Introduction
3	Amplifier Bracket Assembly
4	Wire Harness Schematic
5-11	Installation
12	Warranty

If, after reading your manual, you still have questions regarding this product, we recommend that you see your Rockford Fosgate dealer. If you need further assistance, you can call us direct at **1-800-669-9899**. Be sure to have your serial number, model number and date of purchase available when you call.

### **PRACTICE SAFE SOUND**

Continuous exposure to sound pressure levels over 100dB may cause permanent hearing loss. High powered auto sound systems may produce sound pressure levels well over 130dB. Use common sense and practice safe sound.

## Safety

This symbol with "WARNING" is intended to alert the user to the presence of important instructions. Failure to heed the instructions will result in severe injury or death.

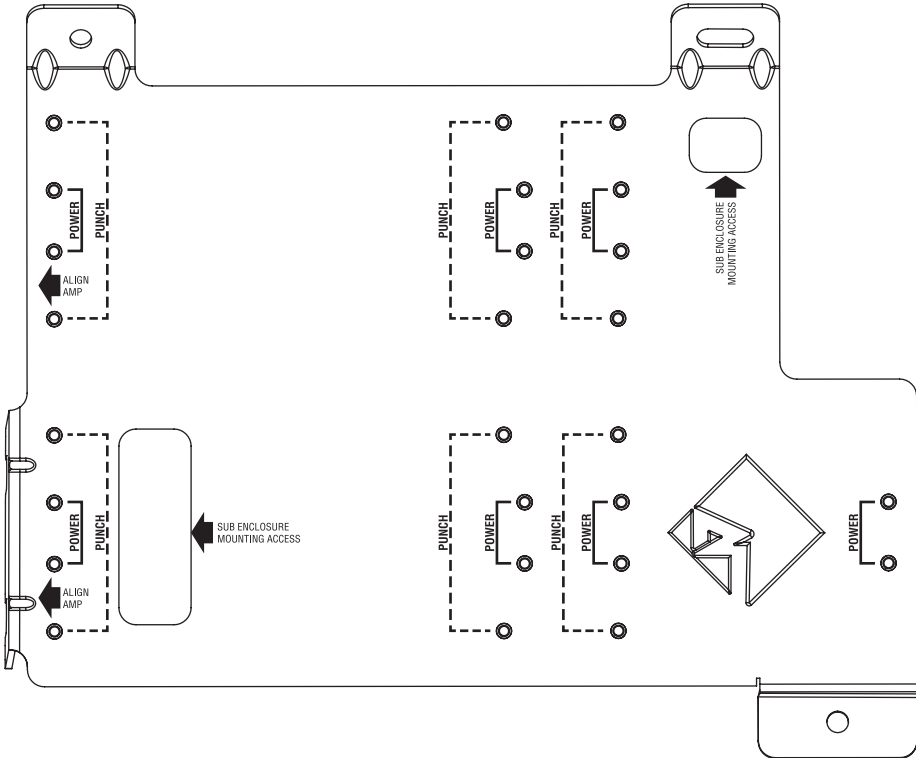


This symbol with "CAUTION" is intended to alert the user to the presence of important instructions. Failure to heed the instructions can result in injury or unit damage.

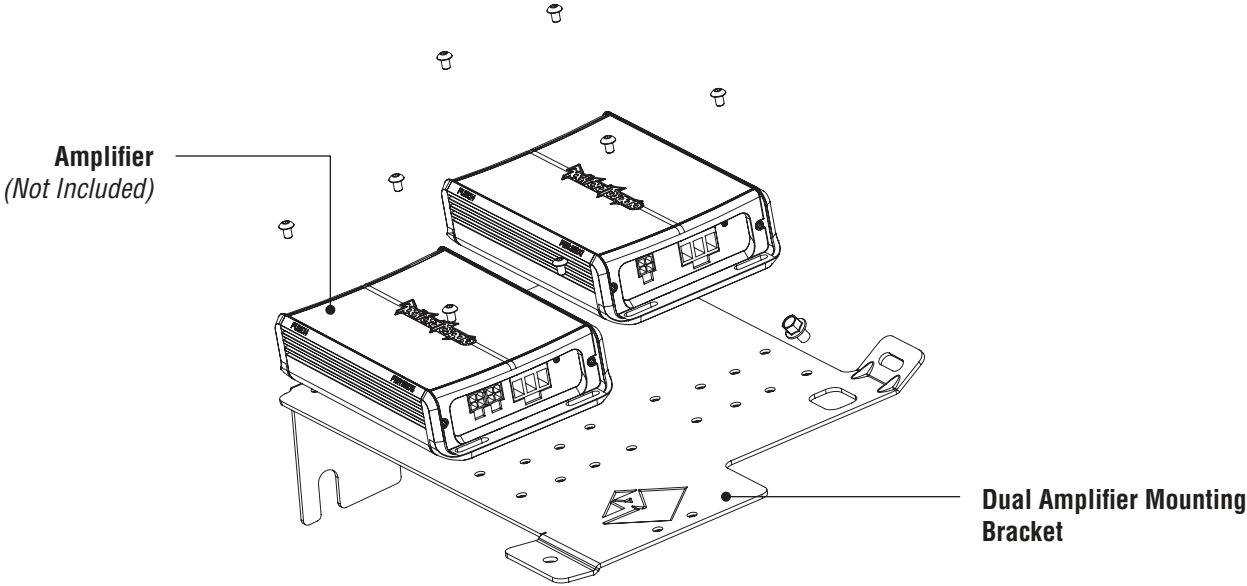


- To prevent injury and damage to the unit, please read and follow the instructions in this manual. We want you to enjoy this system, not get a headache.
- If you feel unsure about installing this system yourself, have it installed by a qualified Rockford Fosgate technician.
- Before installation, disconnect the battery negative (-) terminal to prevent damage to the unit, fire and/or possible injury.

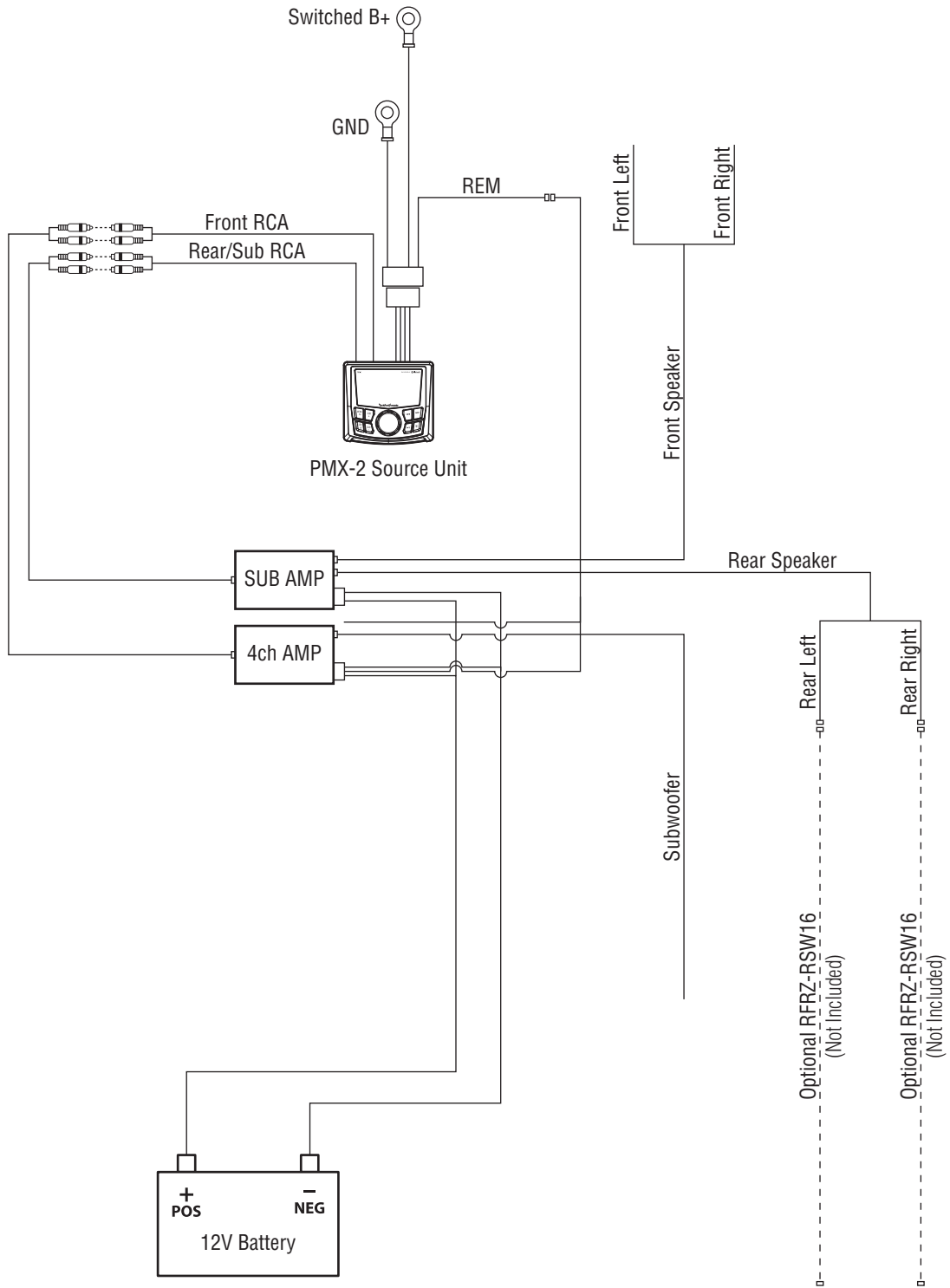
**AMPLIFIER BRACKET**



**TYPICAL ASSEMBLY**



# Wire Harness Schematic



## Contents

- (1) Amplifier Mounting Bracket
- (1) Main Power / Ground / Rear Speaker Harness w/ Fuse
- (1) Source Unit Power Harness
- (1) Front Speaker Harness
- (3) RCA Harnesses
- (2) Foam Tape Pads
- (1) Bolt / Screw Pack
- Plastic Wire Tie Wraps
- Installation Guide

## Installation Tools

The following is a list of suggested tools needed for installation:

- Ratchet
- 15mm Socket / Wrench
- 13mm Socket / Wrench
- Torx - T40
- 5/32" Allen Wrench
- Small Flat Blade Screwdriver
- Wire Cutters

## Installation Considerations

This section focuses on some considerations for installing your Polaris® RZR® Dual Amplifier Installation Kit. This manual will illustrate the installation process with a 2016 Polaris RZR XP4 Turbo.

If you feel unsure about installing this system yourself, have it installed by a qualified technician.

### CAUTION

Before installation, disconnect the battery negative (-) terminal to prevent damage to the unit, fire and/or possible injury.

### CAUTION

Before beginning any installation, follow these simple rules:

- Be sure to carefully read and understand the instructions before attempting to install this dual amplifier installation kit.
- Consult your UTV's service manual for model specific information. Models may differ from year to year depending on factory options and aftermarket accessories added.
- This dual amplifier installation kit is specifically designed to work with Rockford Fosgate's compact chassis Punch® and Power amplifiers.
- With the addition of an amplifier or source unit, be sure that your current charging system is in proper working order.
- Visit [rockfordfosgate.com](http://rockfordfosgate.com) for more comprehensive installation videos and product information.

## Applicable Models:

- 2014 and up RZR® XP/XP4 1000**
- 2016 and up RZR® XP/XP4 Turbo**
- 2015 and up RZR® S/ XC / 4 900**



The dual amplifier installation kit is designed to work with Rockford Fosgate's compact chassis Punch® and Power amplifiers, along with the RFRZ- RSW16 rear speaker wire kit.

### Step 1 - Remove Hood

Twist the two hood latches and slide toward the front of the vehicle to release the hood.



### Step 2 - Remove Top Dash Panel

Using your Torx screwdriver, unbolt the two factory bolts.



## Installation



Using your hands, pull the top dash piece toward the interior of the vehicle to release it from the dash.



After the brace is disconnected from the center pocket, pull the pocket out of the dash.



Disconnect all of the wires connectors and set aside.



### Step 4 - Remove Dash

Using your Torx screwdriver, remove the two bolts holding the dash onto the chassis. There are two and they are located above the center pocket.

Once the bolts are removed you will need to pull the dash off of the chassis.



### Step 3 - Remove Center Pocket

Using a Torx screwdriver, remove the bolt that attaches the brace to the rear of the pocket.

NOTE: This brace will need to be removed until the amplifier bracket gets installed.



NOTE: When pulling the dash off you will notice that it still feels attached. It has several retaining clips on each side that are holding it in place. Just continue pulling toward the interior of the vehicle to release the dash from the chassis.



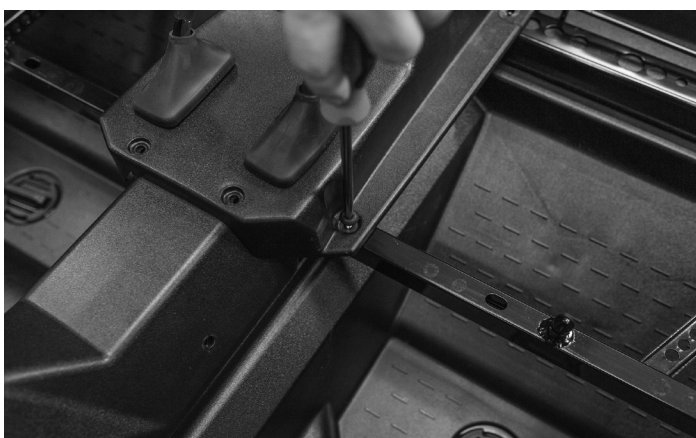
## Step 5 - Remove Center Console

After all of the seats have been removed, you will need to remove the center consoles on the vehicle. This is necessary to route the wire harnesses down the vehicle.

NOTE: On the 4 seater that is shown, both the front and rear center consoles will be removed. For 2 seat vehicles, there is only one center console that needs to be removed.



Disconnect the rubber boots on the shifter and seat belts by squeezing them inward to loosen them from the console.



Next remove the bolts and plastic retaining clips. Use a small flat blade screwdriver to pry the plug out of the retainer so it can be removed.



Next, remove the rear console if equipped (4 seater).



## Step 6 -Routing Main Harness

Now that the center console is out of the way, take the main wire harness and place it through the fire wall (amplifier connectors side).



Once the wires are through, you will need to pull them up from the front of the vehicle.

## Installation



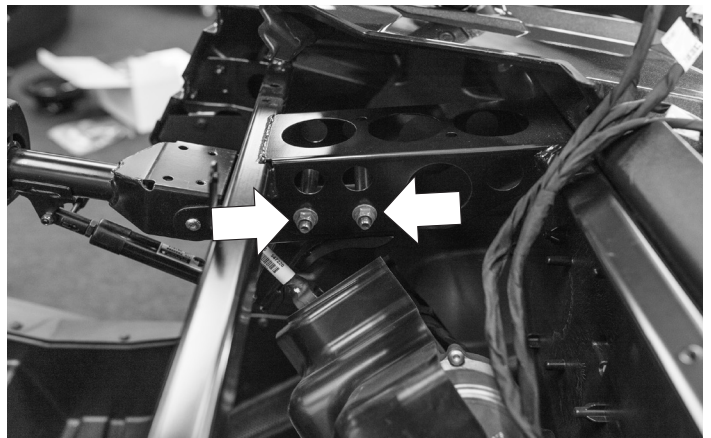
Remove the existing rubber grommet in the fire wall and cut along the score lines to open it up for the wire harness.



Pull the wire harness through to provide enough slack for when mounting the amplifiers.



Place the grommet over the wire harness.

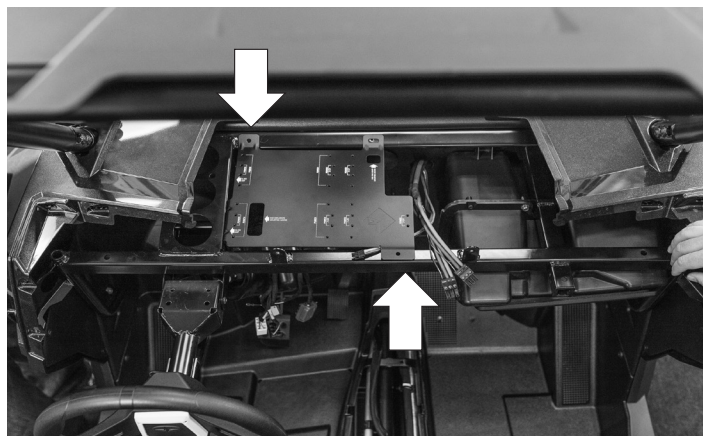


### Step 7 - Install Amplifier Bracket

You will need to loosen the two nuts that are located above the steering column. These will hold one side of the bracket.



Insert the wire harness in through the opening on the fire wall and lock the grommet in place.

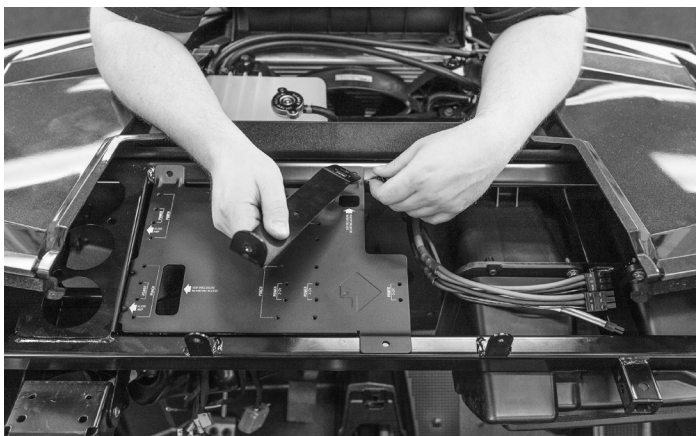


Lay the bracket on top of the dash bar and align the notches with the two bolts that were just loosened on the steering column.

NOTE: Before installing, apply foam pads to the bottom side of the bracket.

NOTE: All of the hardware should only be hand tightened. Leaving all of the fasteners loose will make installation process easier.





Now install the center pocket brace back into the vehicle in between the amplifier bracket and the fire wall support bar. Use the existing factory hardware.



Tighten the two nuts on the steering column bracket.



## Step 8 - Route Front Speaker Wire Harness

Take the left front speaker harness and route it along the driver's side down tube. Next run the right front speaker harness down the passenger down tube behind the dash.

NOTE: It is recommended to run both front speaker harnesses through the down tubes when installing Rockford Fosgate's RFRZ-FSE front speaker pods.



## Step 9 - Route Source Unit Power Harness

Next you will need to route the source unit power harness through the fire wall. Starting on the inside of the vehicle, take the end with the ring terminals and push them through the grommet where the main harness was just run.

NOTE: This harness is designed to work with Rockford Fosgate's PMX-2 Source Unit.



Connect the ring terminals to the factory accessory power distribution block. The power ring terminal gets connected to the ACC and the ground ring terminal gets mounted to the screw to the left.

NOTE: Some vehicle grounds are not connected at the distribution block from the factory. It is recommended connecting the ground to the screw like the picture above.

## Installation



### Step 10 - Mount Amplifier(s)

Set the amplifier on top of the bracket and align it to the left. The bracket is labeled with indicators for the amplifier mounting screws. Simply slide the amplifier over to the left (driver's side) and line up the holes. Using the supplied hardware, secure the amplifier(s) to the bracket.



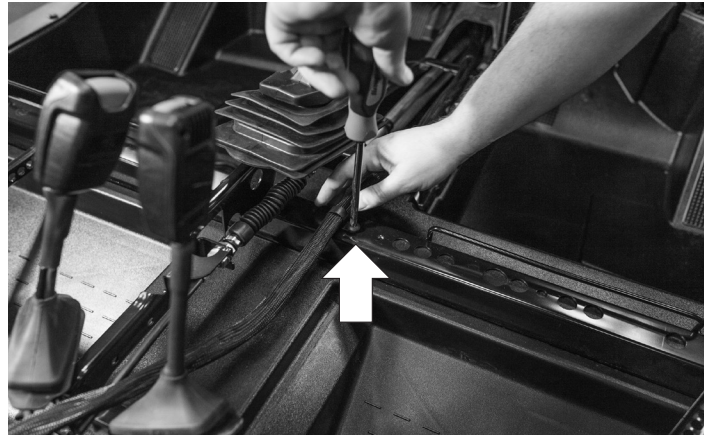
### Step 11 - Connect Wires to Amplifier(s)

Each wire harness is labeled indicating what it is used for. Plug in each of the wire harnesses into the amplifiers.



Plug in the RCA cables at this time as well. Route them in between the amplifier and the tab. Place the loose ends down toward the back of the center pocket location.

NOTE: Depending on the type of source unit being used. You may not use all three RCA cables that are included in the kit. If you are using the recommended PMX-2, you will only need to connect the Front and Sub RCAs to the appropriate amplifiers.

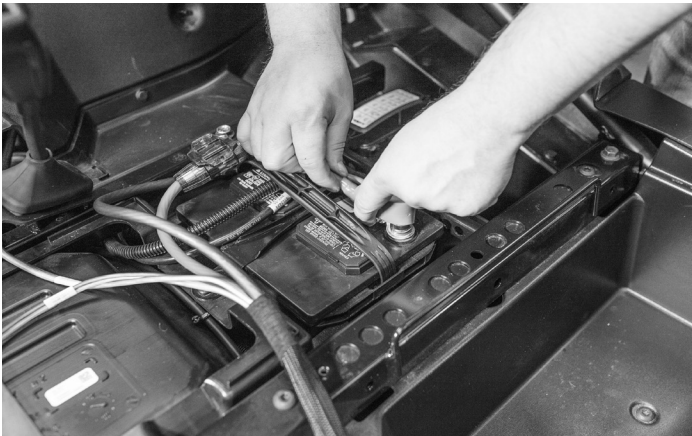


### Step 12 - Attaching Main Wire Harness

Route the main harness to the passenger side of the shifter and between the seat belt latches. Using the plastic wire clip and wire ties, attach the harness to the chassis.



NOTE: Be careful to mount the wire harness on top of the center console supports so it will be clear of moving drive line components.



### Step 13 - Connect to Battery

Once you have wire harness secured, connect the power and ground to the battery terminals.



NOTE: If you have a 2 seater, the wire harness will need to be bundled up and tie wrapped. Do not cut the harness. There is enough clearance with the extra wire length.



### Step 14- Rear Speaker Connectors

This kit is designed to work with Rockford Fosgate's RFRZ-RSW16 rear speaker wire kit. If you are using the kit, you will route the under the rear access panel. If you are not using the kit, simply wire tie the harness out of the way of moving parts or heat.

### Step 15 - Reassemble Vehicle

Once everything is secure, reassemble the vehicle. You will need to leave the top dash panel off so you can adjust the amplifiers. Once the system is tuned, install the top dash panel and hood.

# Warranty

---

**Rockford Corporation offers a limited warranty on Rockford Fosgate products on the following terms:**

## **Length of Warranty**

- POWER Amplifiers – 2 Years
- BMW® Direct Fit Speakers – 2 Years
- All other products – 1 Year
- Any Factory Refurbished Product – 90 days (receipt required)

## **What is Covered**

This warranty applies only to Rockford Fosgate products sold to consumers by Authorized Rockford Fosgate Dealers in the United States of America or its possessions. Product purchased by consumers from an Authorized Rockford Fosgate Dealer in another country are covered only by that country's Distributor and not by Rockford Corporation.

## **Who is Covered**

This warranty covers only the original purchaser of Rockford product purchased from an Authorized Rockford Fosgate Dealer in the United States. In order to receive service, the purchaser must provide Rockford with a copy of the receipt stating the customer name, dealer name, product purchased and date of purchase.

Products found to be defective during the warranty period will be repaired or replaced (with a product deemed to be equivalent) at Rockford's discretion.

## **What is Not Covered**

1. Damage caused by accident, abuse, improper operations, water, theft, shipping.
2. Any cost or expense related to the removal or reinstallation of product.
3. Service performed by anyone other than Rockford or an Authorized Rockford Fosgate Service Center.
4. Any product which has had the serial number defaced, altered, or removed.
5. Subsequent damage to other components.
6. Any product purchased outside the U.S.
7. Any product not purchased from an Authorized Rockford Fosgate Dealer.

## **Limit on Implied Warranties**

Any implied warranties including warranties of fitness for use and merchantability are limited in duration to the period of the express warranty set forth above. Some states do not allow limitations on the length of an implied warranty, so this limitation may not apply. No person is authorized to assume for Rockford Fosgate any other liability in connection with the sale of the product.

## **How to Obtain Service**

Contact the Authorized Rockford Fosgate Dealer you purchased this product from. If you need further assistance, call 1-800-669-9899 for Rockford Customer Service. You must obtain an RA# (Return Authorization number) to return any product to Rockford Fosgate. You are responsible for shipment of product to Rockford.

## **EU Warranty**

This product meets the current EU warranty requirements, see your Authorized dealer for details.